

New: Ultipleat® Plus Metal Fiber Filters

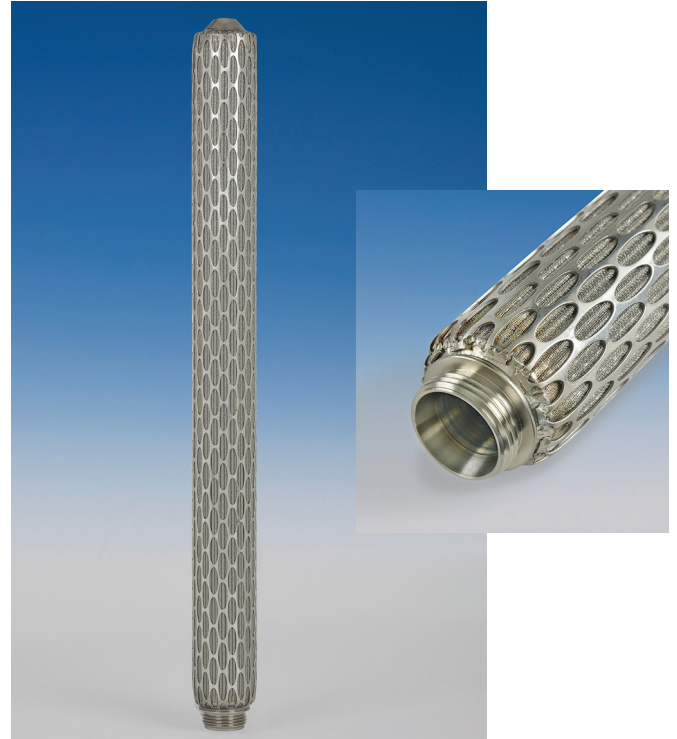


Ultipleat® Plus

Introduction

Pall's new Ultipleat Plus metal fiber filters employ Pall Corporation's unique "Laid Over Pleat" technology to offer extended service life to your process applications. This upgraded version of the Ultipleat candle element also utilizes a patented support mesh design for improved flow channels allowing for a much lower resistance to flow. The customizable filter elements can either be retrofitted to an existing housing or can be specially designed for the needs of your specific application. The Ultipleat Plus is great for applications with high temperature and high dirt-holding capacity requirements and for those that are looking to extend the on-stream life of their filters.

- Ideal for polymer melt filtration applications
- Available in a range of media grades and materials to best suit the needs of your specific application
- Greater surface area with Pall's proprietary laid-over pleat geometry allowing for even flow distribution and more dirt-holding capacity
- 25-50% longer on-stream life than traditional fan pleat candles
- Shorter residence times and narrower residence time distribution
- Retention ratings from 7 micron and up
- Manufactured under ISO 9001 quality system

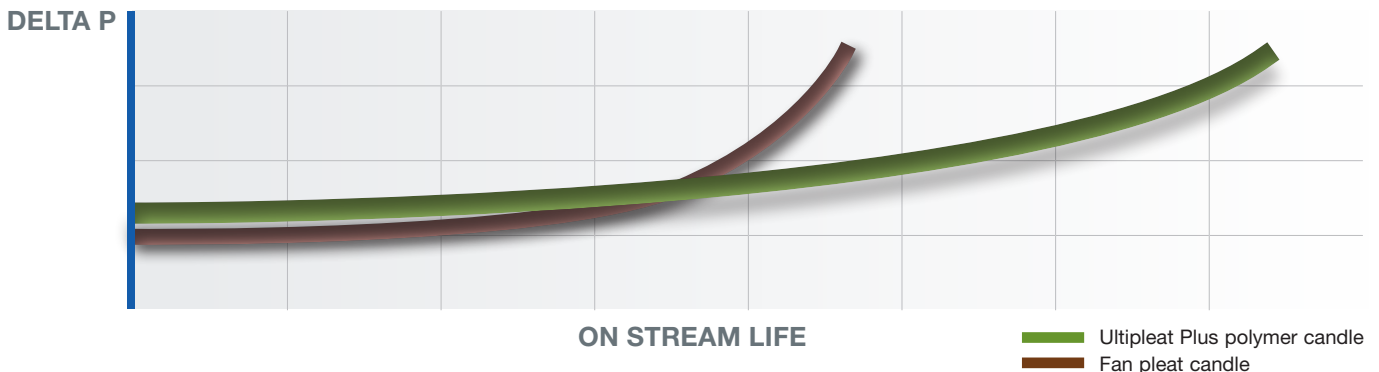


Typical Applications

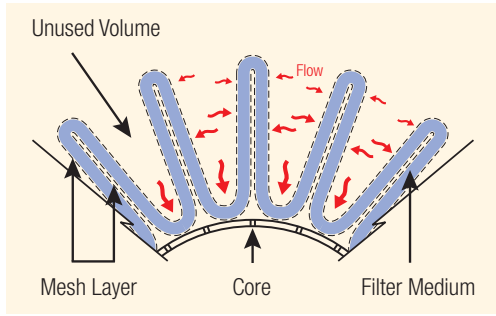
Ultipleat Plus candles are recommended for polymer melt applications where fine filtration is required and where an increase in on-stream life is desired. They are also beneficial for applications where a lower residence time and/or a smaller residence time distribution is needed. Ultipleat Plus candles can be used with a variety of polymers, including, but not limited to:

- Polyester (PET)
- Nylon (PA 6, PA6,6, etc.)
- Polyurethane
- Carbon Fiber Precursor (PAN)
- Recycled Polymers (rPET, etc.)
- And many more!

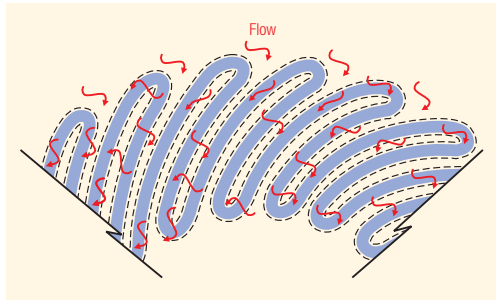
Comparative Performance



Product Benefits



Conventional fan pleat candle construction



Ultipleat candle construction



Ultipleat candle's patented support mesh design for improved flow channels

Features	Advantages	Benefits
Laid Over Pleat	<ul style="list-style-type: none"> • Larger surface area • Even flow distribution 	<ul style="list-style-type: none"> • Up to 50% longer on-stream life • Fewer changeovers, cleanings, polymer waste produced resulting in significant cost savings • Lower residence time resulting in less particulate formation during processing • Higher dirt-holding capacity from uniform use of filter area • Narrower residence time distribution leading to more consistent and particle free product
Layered Construction	<ul style="list-style-type: none"> • Embossed mesh with flow channels • Customizable media 	<ul style="list-style-type: none"> • Reduced pressure differential resulting in longer on-stream life • Fine filtration available from 7 micron and up

Performance Specifications

Standard filter grades

7 µm and up

Maximum differential pressure

128 bard (1850 psid)

Maximum operating temperature

330°C (626°F)

Product Specifications

Standard materials of construction

304, 304L, 316, 316L

Standard Dimensions (nominal)

Outside Diameters: 1.375" – 2.75"

Lengths: 26 inch (66 cm) Sections



25 Harbor Park Drive
Port Washington NY 11050
+1 516 484 3600 telephone
+1 800 289 7255 toll free US

Portsmouth - UK
+44 (0)23 9233 8000 telephone
+44 (0)23 9233 8811 fax
industrialeu@pall.com

Filtration. Separation. Solution.SM



Visit us on the Web at www.pall.com

Pall Corporation has offices and plants throughout the world. For Pall representatives in your area, please go to www.pall.com/contact

Because of technological developments related to the products, systems, and/or services described herein, the data and procedures are subject to change without notice. Please consult your Pall representative or visit www.pall.com to verify that this information remains valid.

© Copyright 2018, Pall Corporation. Pall, **PALL**, and Ultipleat are trademarks of Pall Corporation. ® Indicates a trademark registered in the USA. Better Lives. Better Planet and Filtration. Separation. Solution.SM are service marks of Pall Corporation.