



Pall Corporation

A large, vibrant sunflower with yellow and orange-red petals and a dark brown center. A small bee is perched on one of the petals. The background is a soft-focus blue sky and green foliage.

Responsibility.



Solutions Providers at Heart

Pall Corporation solves complex filtration, separation, purification and contamination control problems for diverse customers around the world. These solutions enable companies, industrial and health care enterprises, and municipalities to ensure the purity of water and food; to engineer lifesaving vaccines and biotechnology drugs; to help protect patients and caregivers; and to develop fluid management innovations for almost every manufacturing process. Our enabling technologies help make good products better, safer and even possible.

Pall is much more than a filter company. We are Total Fluid ManagementSM specialists. Our wealth of scientific knowledge, deep applications experience and vast portfolio of proprietary core materials give us unmatched capabilities to help customers be more successful, and to help enable a greener future for everyone.

Respect.

Setting the Standard, Sharing the Responsibility

As a Total Fluid Management specialist and a leading innovator in filtration, separation and purification, Pall Corporation recognizes and embraces its role as a global citizen, including an obligation to the environment. Pall is dedicated to helping customers minimize their carbon footprints, maximize recycling and waste reduction efforts, and ensure the most efficient utilization of natural resources and raw materials. We are applying the same know-how and dedication to our own operations. The health and welfare of our customers, shareholders, employees and communities depend on it.

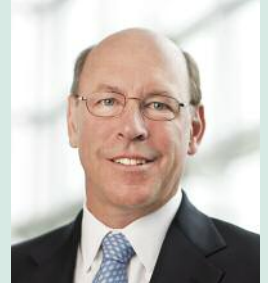
Pall's approach to environmental stewardship is proactive and is anchored in a culture of continuous improvement. We team with customers in ways specific to their industries, providing them with technologically superior products and engineered process solutions that improve and strengthen their businesses while reducing their environmental impacts. Customers worldwide look to us to help them purify and conserve water, consume less energy, make alternative energy sources possible, advance medicine and minimize emissions and waste.

The same is true in our own business. We have adopted ambitious goals to continuously improve Pall's environmental profile, both for the near- and the long-term. We are already well on our way toward achieving some key benchmarks — a 10% reduction in utility usage, a 10% reduction in waste output and 10% reduction in Pall's carbon footprint by the end of 2010.

Pall's approach to environmental stewardship is proactive and is anchored in a culture of continuous improvement.



One of the ways Pall is working to integrate aggressive environmental sustainability metrics such as these into our business is by using globally accepted greenhouse gas protocols to




measure and manage carbon emissions. We are also a partner in the U.S. Environmental Protection Agency's Climate Leaders program, an industry-government partnership committed to developing long-term climate change strategies.



Committees at Pall facilities are set up to oversee on-site programs to identify and implement strategies to accomplish our environmental goals. Best practices are benchmarked and shared.

Some of the steps we are taking to accomplish these environmental sustainability goals are discussed in the following pages. We encourage you to visit our Web site at www.pall.com/green for updates on progress, as well as for information about other environmental initiatives.

Pall Corporation is committed to enabling a greener future. To our employees: please become more involved in supporting our efforts. To our customers: call on us to partner on environmental solutions to your fluid management challenges. We welcome your interest in our environmental activities and invite you to share the vision for a cleaner, healthier world.


Eric Krasnoff
Chief Executive Officer and President



ENABLING A
GREENER
FUTURE™



Reduce.

Pall's Greenhouse Gas Emissions Reported for Fiscal Year 2009

73%

Percentage of indirect emissions from purchased electricity and steam

27%

Percentage of direct emissions from operations



Reducing Our Carbon Footprint

In 2007, Pall joined with many other companies in the Carbon Disclosure Project (CDP), a global initiative to inventory greenhouse gas (GHG) emissions and evaluate the risks and opportunities from climate change on business operations. Our annual GHG inventory provides important baseline information that is used to make informed and effective policy decisions to reduce Pall's carbon footprint.

CARBON DISCLOSURE PROJECT

Meeting and Exceeding International Environmental Standards

ISO 14001 is the international standard for environmental management systems. Worldwide, 100% of Pall's plants have achieved ISO 14001 certification. The program has helped Pall minimize environmental impact, improve compliance and reduce costs.

Shrinking Our Manufacturing Footprint

Pall is committed to shrinking its manufacturing footprint by consolidating operations and maximizing use of excess capacity. Both steps will reduce our utility consumption and carbon emissions worldwide.

Reducing Our Environmental Impact

10 % reduction in utility consumption*

10 % reduction in waste output*

10 % reduction in carbon emissions*

2010

100%

The number of Pall facilities that are ISO 14001 certified

* Based on FY 2006 baseline figures.



ENABLING A
GREENER
FUTURE.™

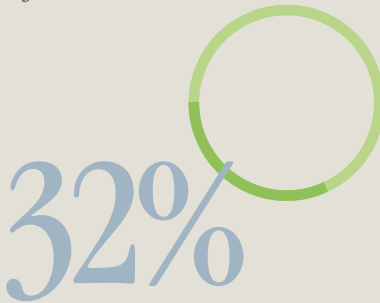


Recycle.

Recycling Efficiencies Reported for Fiscal Years 2006-2009



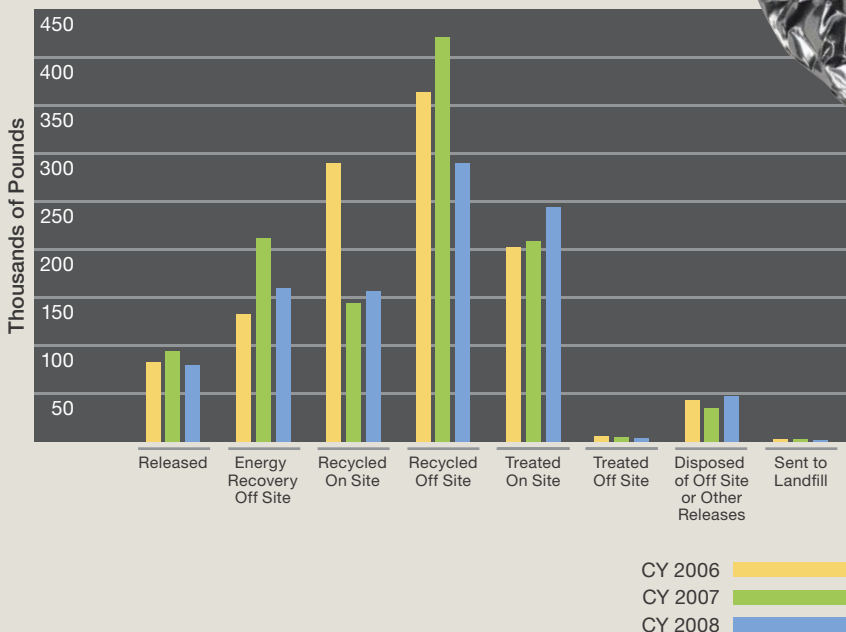
Waste reduction costs at Pall manufacturing facilities



Increased recycling tonnage at Pall manufacturing facilities

Toxic Release Inventory (TRI)

Categories Reported
CY 2006-2008



Reducing and Recycling Waste

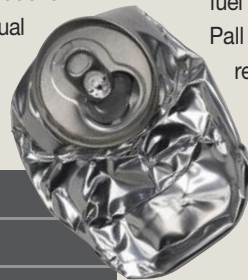
Waste reduction and recycling is a cornerstone of Pall's environmental agenda. A comprehensive program to map out our material and chemical waste streams is underway at all Pall manufacturing facilities. This approach has already yielded significant improvements at our Western Hemisphere manufacturing locations and has been extended to other Pall facilities.

Partnering with Customers

Water Conservation

A Pall mining customer uses highly sensitive equipment that relies on a constant supply of fresh water. Pall was engaged to help engineer a system that would minimize water consumption as well as decrease the salinity of water discharged into the local creek and river systems.

The desalination plant Pall helped design is capable of processing enough water to fill two Olympic-size swimming pools every day, conserving approximately 241 megalitres of fresh water annually. In its first year of operation, the project was distinguished for "greatest reduction" by the local water authority's annual business awards program.



Sustainable Water Management

An energy supply customer relied on Pall to engineer an environmentally sustainable water filtration system to support its gas production pipeline. Pall's solution was a fully customized, integrated membrane system that removes a wide variety of contaminants from the water supply while providing extensive management flexibility. The facility, which was successfully brought online in December 2007, is currently processing nine million liters of produced water per day (MLD) and has the capacity to support up to 15 MLD.

Resource Recovery

Pall's new resource recovery system for manufacturers of solar silicon, an essential element in the production of solar energy panels, recaptures valuable silicon fibers often lost in the production process and recovers up to 95% of the ultra pure process water for reuse. The recovery system efficiently salvages two key resources while minimizing waste discharged into municipal sewer systems.

Alternative Energy Production

Filtration and separation technologies play an important role in the production of biodiesel, an alternative fuel produced from organic, non-petroleum sources. Pall is a major supplier of products to efficiently remove excess water and contaminants during the biodiesel production process. Our sophisticated filtration systems help increase production yields and purity, decrease energy use and ensure the delivery of high quality, particle-free biodiesel fuel.



ENABLING A
GREENER
FUTURE™

Rebuild.



In May 2008, Pall's facility in Buccinasco (Milan), Italy, was a finalist in the Urban Land Institute's 2008 Awards for Excellence (Europe). The 7,000 sq. meter/75,348 sq. foot, 3-building complex is sustainably engineered at every level, from renewable construction materials to energy efficient operating systems.



Building Greener Facilities

- On-site electric power plant
- Energy-efficient heating and air conditioning (HVAC) system that produces hot and cold water simultaneously and regulates North and South building exposures independently
- Water storage tanks that double as fire control reservoirs
- Glass, paper and plastics recycling systems throughout the buildings



New Pall World Headquarters

- Glass walled entrance and cafeteria will use low E coated, 1" insulated glass for reduced energy consumption
- Recycling of materials during construction diverted nearly 225,000 lbs. of waste from landfills
- A sophisticated Building Management System is reducing energy consumption by 4 million kilowatt hours per year
- Water conservation systems are saving over 9 million gallons per year
- Use of low VOC emission materials

Green.

Pall's newly renovated World Headquarters opened in Port Washington, New York in 2009. The 24,526 sq. meter/264,000 sq. foot retrofitted facility is among the most energy-efficient buildings in the Pall network, incorporating state-of-the-art sustainable components.



ENABLING A
GREENER
FUTURE™



Renew.

Small text on a document in the bottom left corner, partially obscured.

Getting Greener All the Time

Embedded in Pall's business philosophy is a culture of continuous improvement. This is the foundation of our commitment to customers and also applies to our environmental stewardship. From the benchmarking of goals to the transference of best practices, Pall's unwillingness to accept the status quo is the engine that drives our success.

Employee Health & Safety

Pall has established a series of voluntary health, safety and environment (HSE) goals to address two strategic initiatives: to provide a safe and healthy workplace and to protect and improve the environment. Managed by a Safety Committee at each Pall site, HSE programs not only comply with training requirements, but also incorporate the varied interests of our employees. A growing number of sites have established "Green Committees" for employees passionate about environmental sustainability.

Pall's Core Values

- Always do what is right for employees, customers, suppliers, shareholders and the local community
- Honesty and integrity in all of our dealings
- Responsibility and accountability for our actions

At Pall, we always try to do what is right for employees, customers, suppliers, shareholders and the local community.



Meeting Globally Recognized Corporate Responsibility Standards

FTSE Group confirms that Pall Corporation has been independently assessed according to the FTSE4Good criteria, and has satisfied the requirements to become a constituent of the FTSE4Good Index Series.

Created by the global index company FTSE Group, FTSE4Good is an equity index series that is



FTSE4Good

designed to facilitate investment in companies that meet globally recognized corporate responsibility standards.

Companies in the FTSE4Good Index Series have met stringent social and environmental criteria, and are positioned to capitalize on the benefits of responsible business practice.



Pall Corporation

Corporate Headquarters
25 Harbor Park Drive
Port Washington, NY 11050

800.645.6532 toll free
516.484.5400 phone
516.484.9754 fax
www.pall.com/green web

Pall Corporation has offices and plants throughout the world.



ENABLING A
GREENER
FUTURE™

To see how Pall is helping enable a greener, safer and more sustainable future, visit www.pall.com/green.




Recycled

Supporting responsible use
of forest resources

www.fsc.org Cert no. SGS-COC-004136
© 1996 Forest Stewardship Council



Printed on FSC certified paper containing 100% post consumer recovered fiber. The FSC trademark identifies products which contain fiber from well-managed forests certified and other verifiable sources in accordance with the rules of the Forest Stewardship Council.

© Copyright 2010, Pall Corporation. Pall, , are trademarks of Pall Corporation. ® Indicates a Pall trademark registered in the USA. *Filtration. Separation. Solution.SM* is a service mark of Pall Corporation.